

Race and Hispanic origin of householder and year	Number (thou- sands)	Percent distribution										Median income		Mean income	
		Total	Under \$5,000	\$5,000 to \$9,999	\$10,000 to \$14,999	\$15,000 to \$24,999	\$25,000 to \$34,999	\$35,000 to \$49,999	\$50,000 to \$74,999	\$75,000 to \$99,999	\$100,000 and over	Value (dol- lars)	Stan- dard error (dol- lars)	Value (dol- lars)	Stan- dard error (dol- lars)
ALL RACES															
2002	111,278	100.0	3.2	5.9	7.0	13.2	12.3	15.1	18.3	11.0	14.1	42,409	139	57,852	217

Figure 1: Household income data for 2002

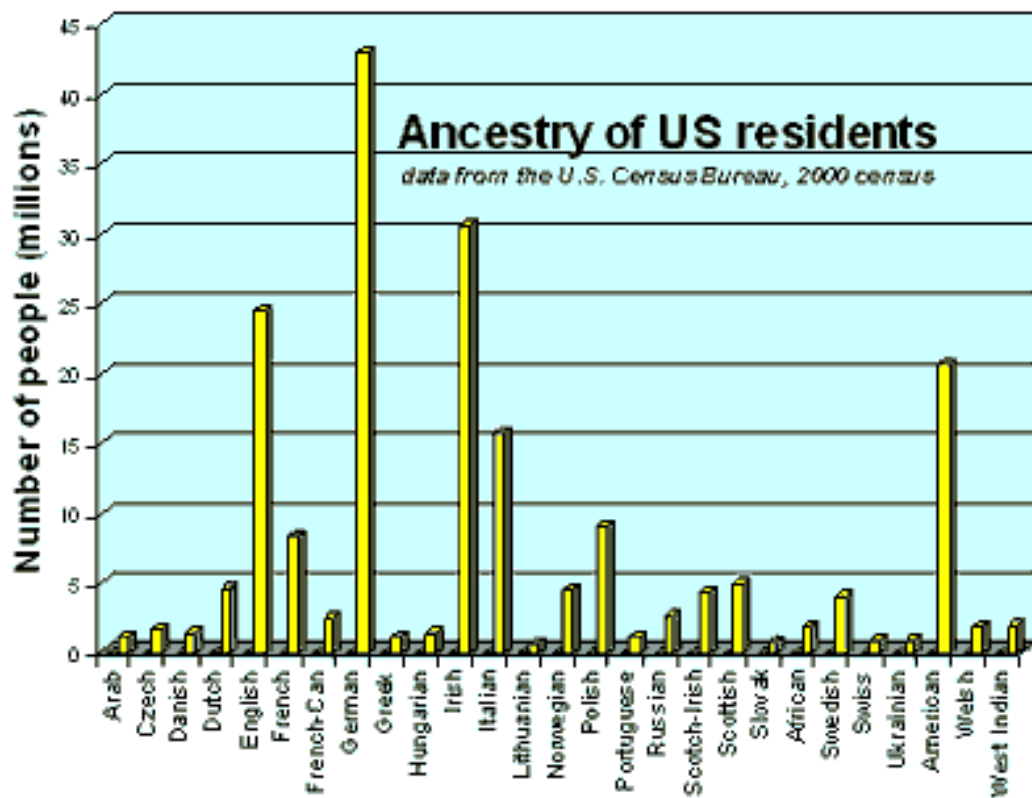


Figure 2: Ancestry of U.S. Residents

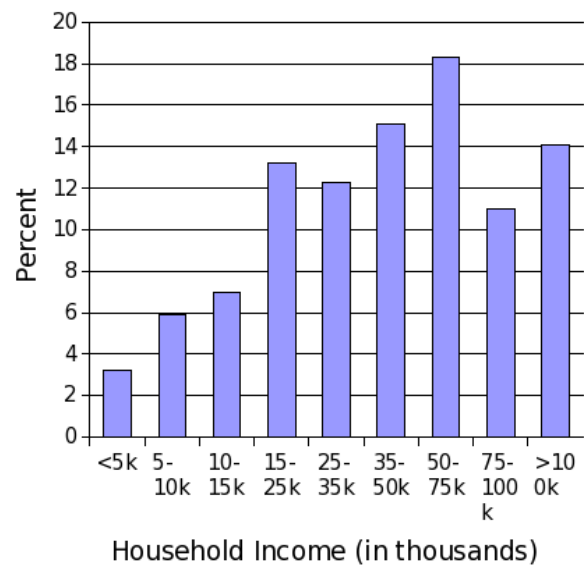


Figure 3: Household Income 2002

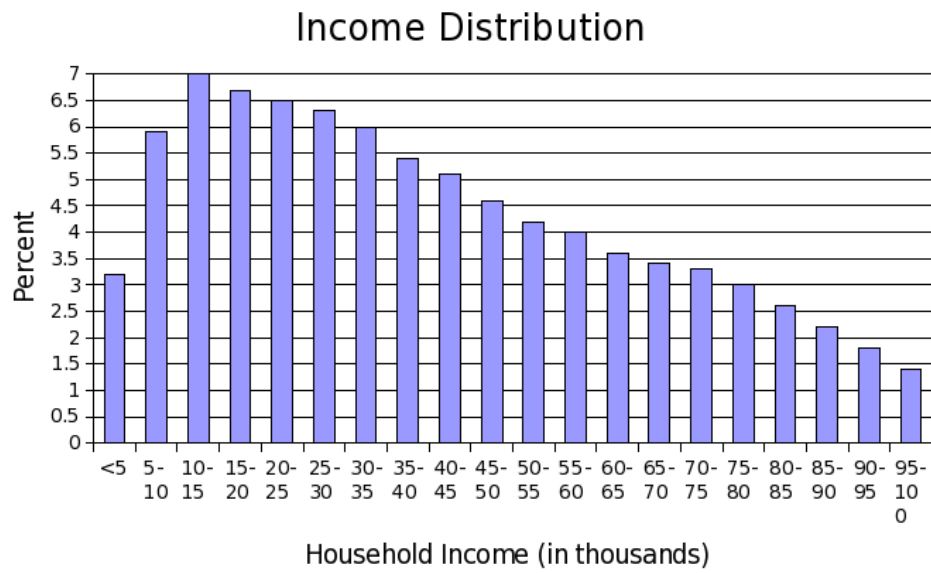


Figure 4: Household Income 2002 (Interpolated)

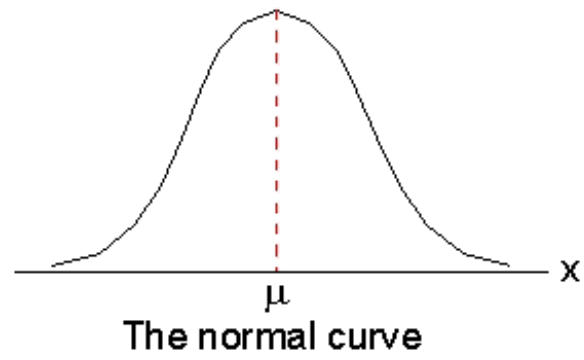


Figure 5: The normal distribution

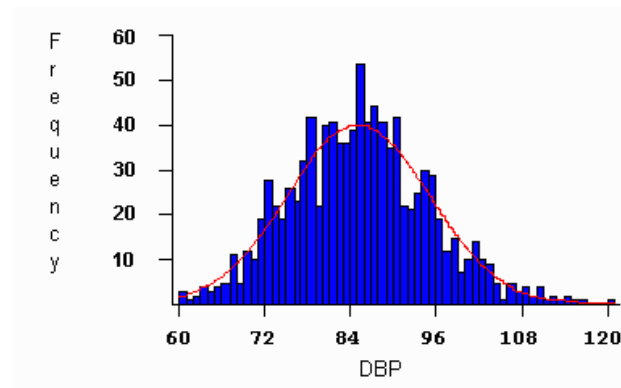


Figure 6: Diastolic Blood Pressure Distribution

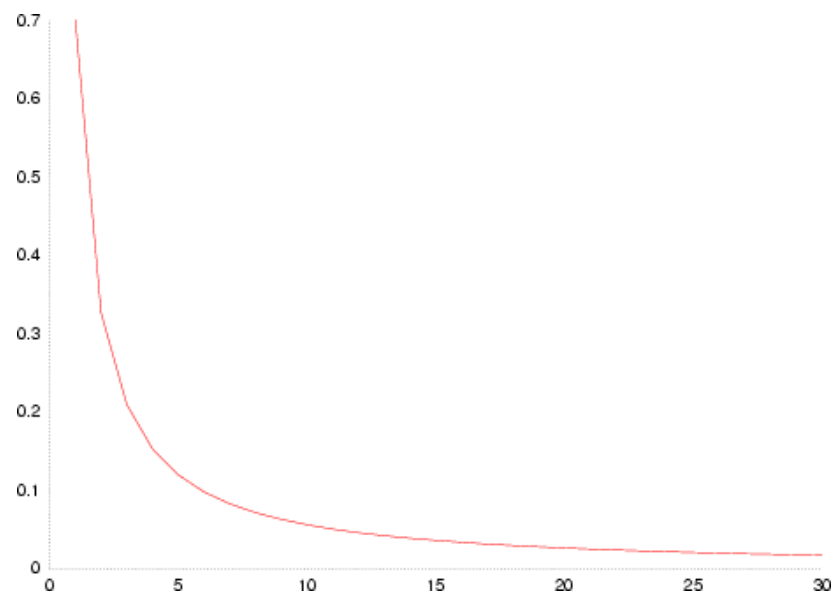


Figure 7: An exponential distribution