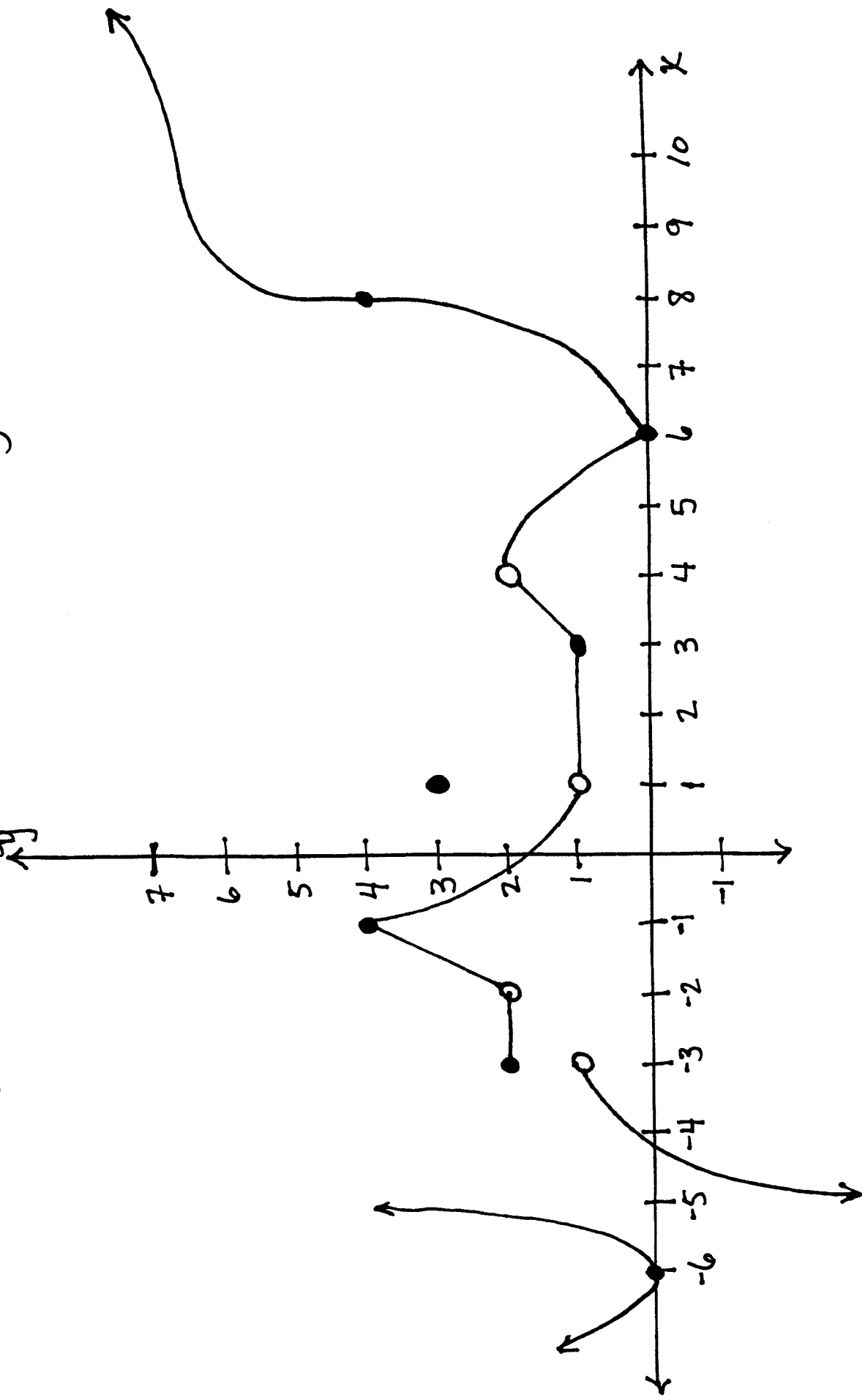


# Limits, Continuity, and Differentiability



- Find the following:
- (1) Derivative DNE/undef. at  $x =$  (Why?)
  - (2) Not continuous at  $x =$
  - (3)  $\lim_{x \rightarrow -3^-} f(x) =$   $\lim_{x \rightarrow -3^+} f(x) =$   $\lim_{x \rightarrow 3} f(x) =$
  - (4)  $f(-3) =$   $f(1) =$
  - (5)  $\lim_{x \rightarrow 1^-} f(x) =$   $\lim_{x \rightarrow 1^+} f(x) =$   $\lim_{x \rightarrow 1} f(x) =$